

ALLDAY
& MILLER



Worcester Road, Uxbridge, UB8 3TH
£1,650 Per Month

 2  1  1  C



Worcester Road, Uxbridge, UB8 3TH

£1,650 Per Month

- First Floor Maisonette
- Modern Family Bathroom
- Wood Flooring Throughout
- Outside Storage Shed
- Two Double Bedrooms
- Part Furnished
- Large Private Rear Garden
- Unrestricted Parking

Description

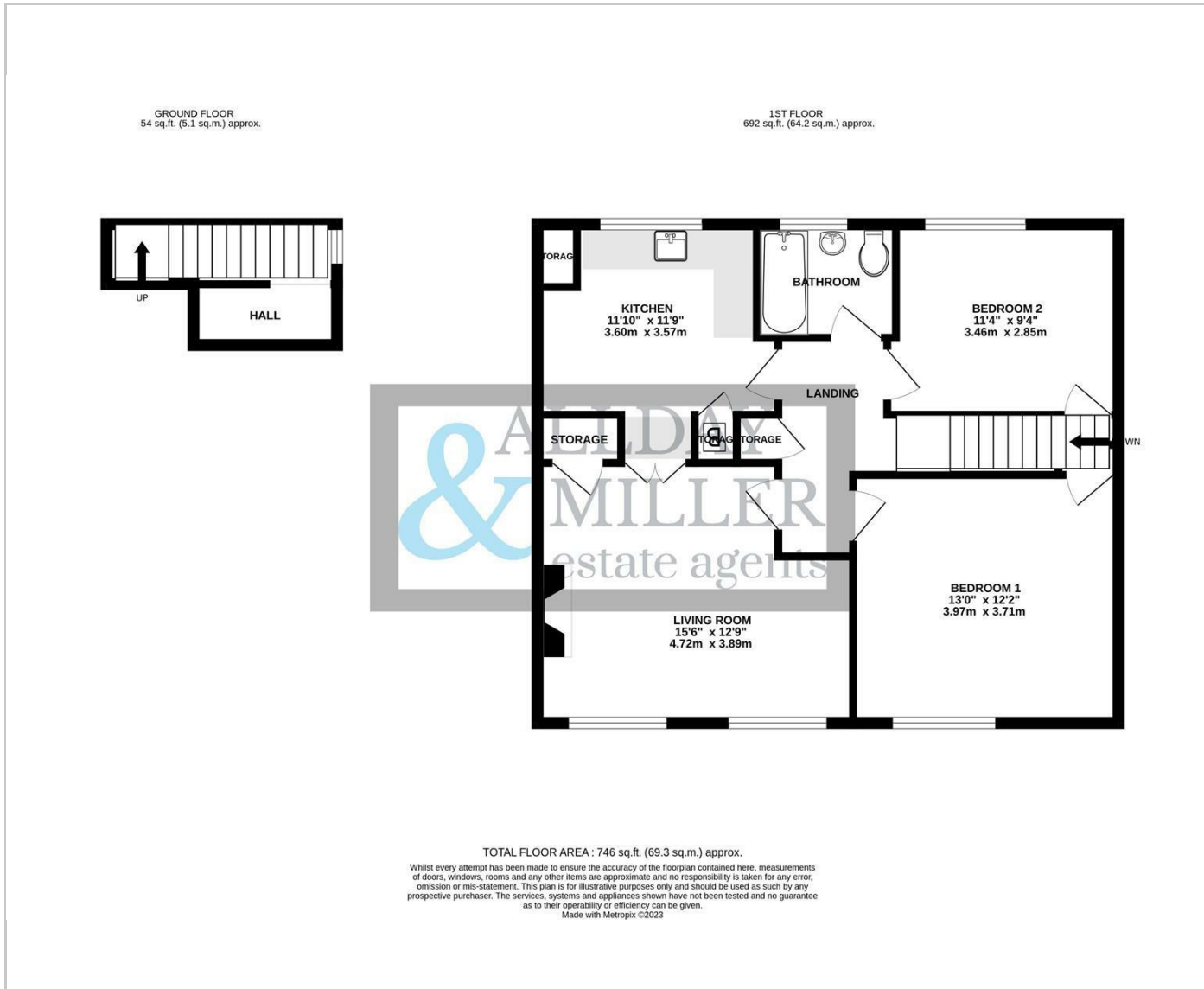
A spacious two bedroom first floor marionette, situated just a short distance from Uxbridge Town Centre. The property is accessed via a private front door with stairs leading up to the accommodation. The living room has a large front aspect window letting in an abundance of natural light, the separate fitted kitchen is spacious with room for a dining space. There are two double bedrooms with fitted wardrobes and a modern family bathroom. The property benefits from a shared rear garden and unrestricted parking.

Situation

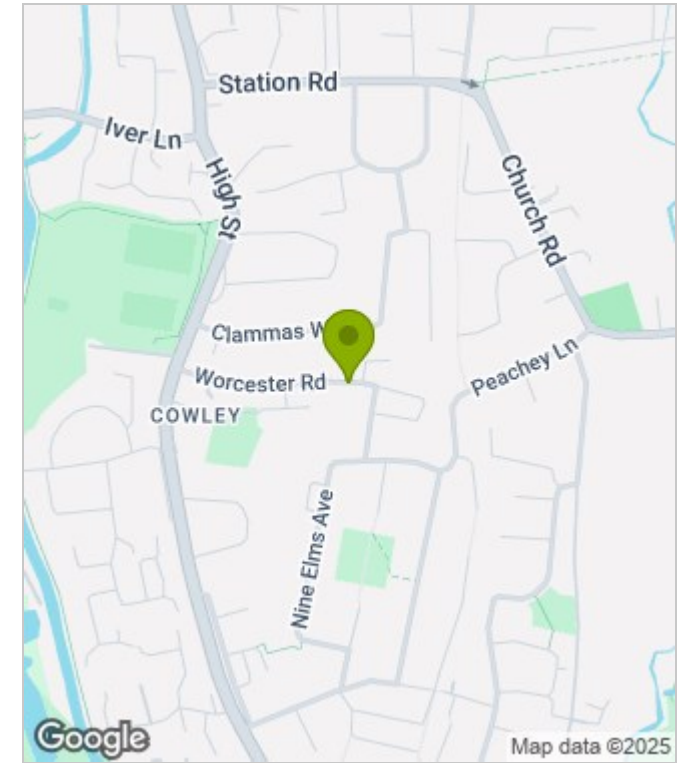
Positioned in this well regarded and sought after residential location, being within close proximity of Uxbridge town centre with its multiple shopping facilities, restaurants, bars and underground station with its Metropolitan and Piccadilly line services to the heart of the capital. For the motorist the A40 is a short drive away giving access to London and the M25.



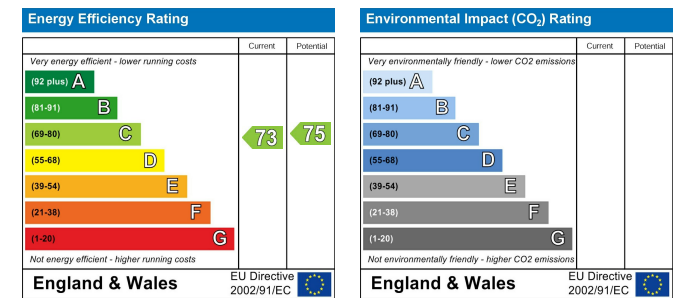
Floor Plans



Area Map



Energy Performance Graph



These particulars, whilst believed to be accurate are set out as a general outline only for guidance and do not constitute any part of an offer or contract. Intending purchasers should not rely on them as statements of representation of fact, but must satisfy themselves by inspection or otherwise as to their accuracy. No person in this firm's employment has the authority to make or give any representation or warranty in respect of the property.